

Customer :  
Project Name :  
Project No. :  
Revision No. :

---

# SPECIFICATION for INDUCTION MOTOR



0		For Bidding			
No.	DATE	DESCRIPTION	PREPARED BY	CHECKED BY	APPROVED BY

# AC INDUCTION MOTOR DATA SHEET

Model No.or RFQ No.		Item No.		Rev. No. [      ]			
Project Name		Project No.		Quantity      sets			
<b>GENERAL SPECIFICATION</b>			<b>PERFORMANCE DATA</b>				
Frame Size	132M		Rated Output	7.5 kW      10.0 HP			
Type	HLP-7.5/4		Number of Poles	4			
Enclosure(Protection)	Totally Enclosed / IP55		Rotor Type	Squirrel Cage			
Method of Cooling	IC411(FC)		Starting Method*	<input checked="" type="checkbox"/> D.O.L <input type="checkbox"/> Y-Δ			
Rated Frequency	60 Hz		Rated Voltage	220 V			
Number of Phases	3		Current	Full Load	27.9 A		
Insulation Class	<input checked="" type="checkbox"/> F <input type="checkbox"/> B <input type="checkbox"/> H		Locked-rotor**	750 %			
Temp. Rise at full load (by resistance method)	at 1.0 S.F      80 deg. C		Efficiency				
Motor Location	<input checked="" type="checkbox"/> Indoor <input type="checkbox"/> Outdoor						
Altitude	Less than 1000 meter		100% Load	91.7 %			
Relative Humidity	Less than 80 %		Power Factor(p.u)				
Ambient Temp.	40 deg. C (Max.)						
Duty Type	Continuous (S1)		100% Load	0.770			
Service Factor	1.15		Speed at Full Load	1760 r.p.m			
Mounting	B3		Torque				
Bearing	Type	Anti-Friction	Full Load	4.2 kg·m      40.7			
	DE/N-DE	6208ZZC3 / 6208ZZC3	Locked-rotor**	180 %      7.5 kg·m			
	Lubricant	Grease	Breakdown**	240 %      10.0 kg·m			
External Thrust	Not applicable		Moment of Inertia (J)				
Coupling Method	<input checked="" type="checkbox"/> Direct <input type="checkbox"/> V-Belt		Load(Max.)	6.226 kg·m <sup>2</sup>			
Shaft Extension	<input checked="" type="checkbox"/> Single <input type="checkbox"/> Double		Motor	0.030 kg·m <sup>2</sup>			
Terminal	Main	<input checked="" type="checkbox"/> Aluminum <input type="checkbox"/> Cast Iron	Sound Pressure Level (No-load & mean value at 1m from motor)	62 dB(A)			
Box	Aux.	<input type="checkbox"/> Yes <input type="checkbox"/> No	Vibration	1.6 mm/sec (peak)			
	Location	Refer to Outline Drawing	Permissible number of consecutive starts	Cold 20 times Hot 15 times			
Application			Paint	Munsell No.	PHANTONE 279C		
Area classification	Non-Hazardous						
Type of Ex-Protection	Not applicable						
Applicable Standard	KS, IEC, NEMA MG1 Part30(Vpeak)						
<b>ACCESSORIES</b>			<b>SUBMITTAL DRAWING</b>				
			Outline Dimension Drawing \ Motor Weight(Approx.)				
			B3      LM-T0133B3PLV01      75 kg				
			<b>REMARK</b>				
			*. Premium efficiency(IE3) acc. to KS C 4202				
			*. SSEN Series				
			*. For use on PWM VFD 10:1VT,3:1CT@1.0S.F&F Temp.rise				
<b>SPARE PARTS</b>			<div style="border: 2px solid red; padding: 10px; text-align: center; font-size: 2em; color: red;">FOR BIDDING</div>				
			Date	DSND	CHKD	CHKD	APPD
			2021-04-29				

Type : HLP-7.5/4

Full Load Torque : 4.2 kg.m

Load moment of Inertia (J) : - kg.m<sup>2</sup>

Motor moment of Inertia (J) : 0.030 kg.m<sup>2</sup>

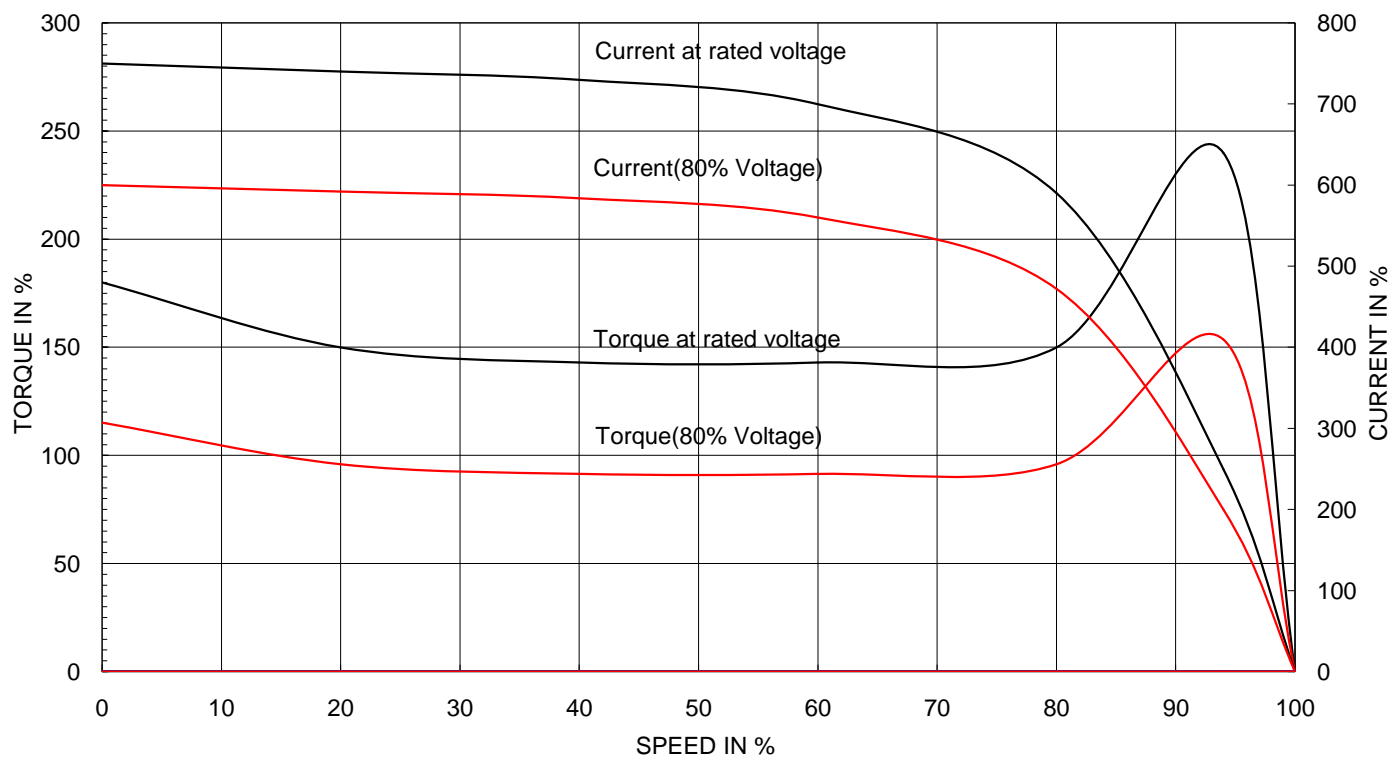
7.5 kW 4 P 60 Hz

Speed at Full Load : 1760 RPM

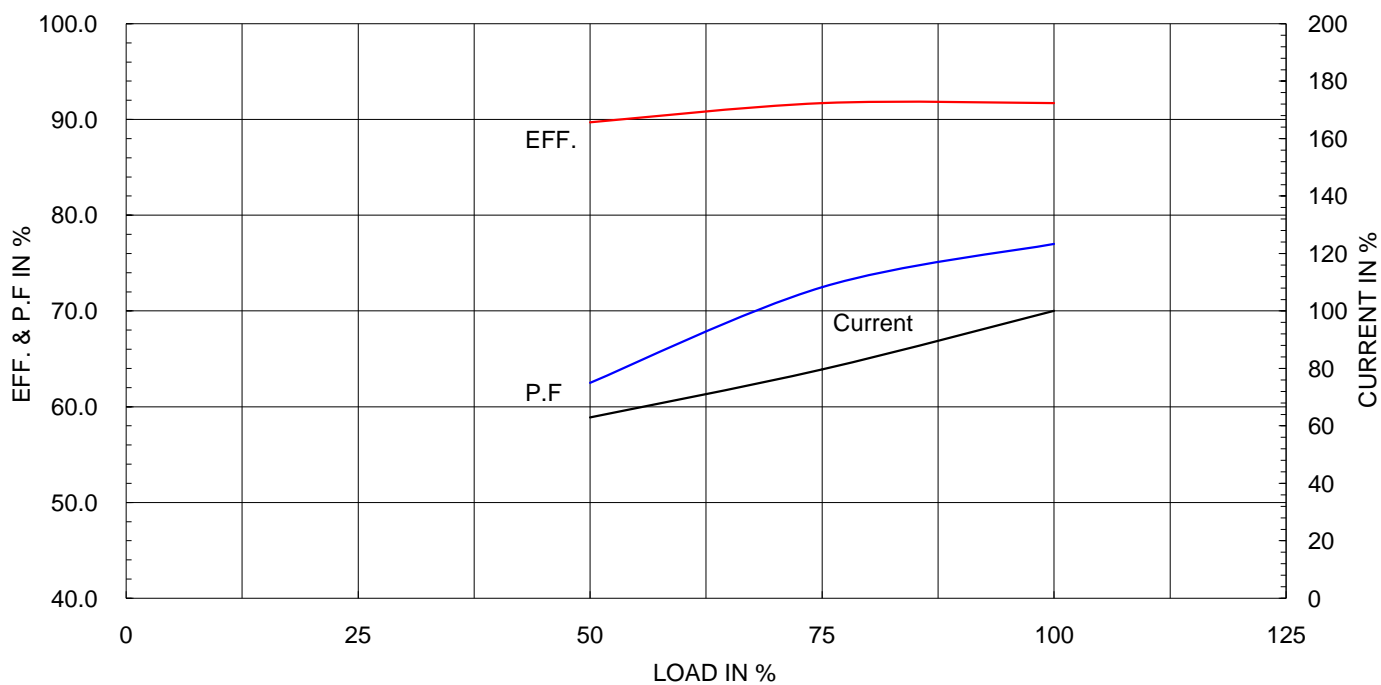
Rated Voltage 220

Full Load Current 27.9A

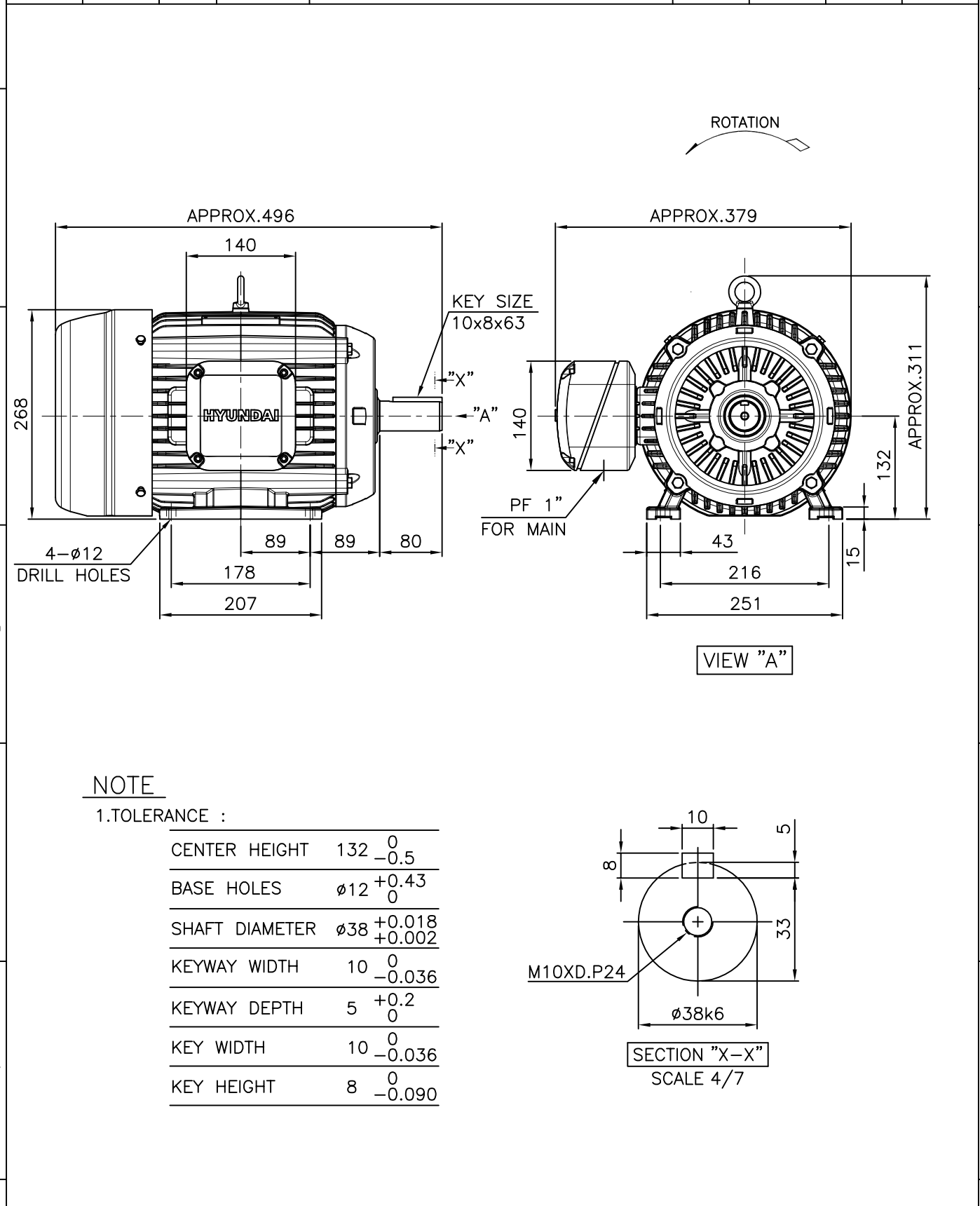
SPEED VS TORQUE & CURRENT CURVE



OUTPUT VS EFF., P.F & CURRENT CURVE



1	2	3	4
▽	50S	REV	DATE
▽▽	12.5S		
▽▽▽	3.2S		
▽▽▽▽	0.4S		

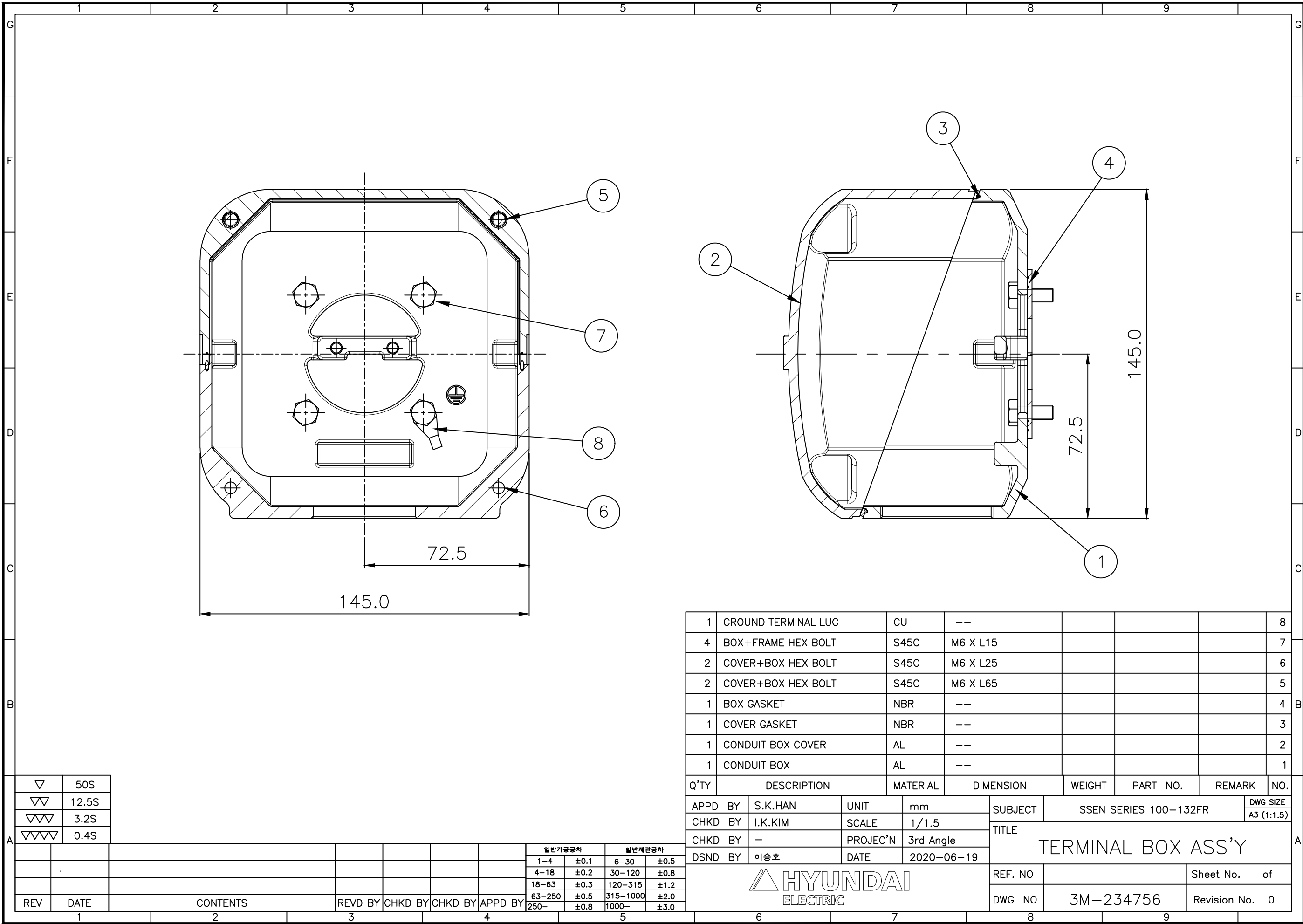


APPD BY	S.K.HAN	UNIT	mm	SUBJECT	KS, IEC Fr.132M	DWG SIZE	A4 ( 1:7 )
CHKD BY	S.Y.KIM	SCALE	1/7	TITLE	OUTLINE		
CHKD BY	I.K.KIM	PROJEC'N	3각법 (3rd Angle)				
DSND BY	S.H.LEE	DATE	2019.06.17				
HYUNDAI ELECTRIC				REF. NO		Sheet No.	of
				DWG NO	LM-T1133B3PLV01	Revision No.	0

THIS DRAWING IS PROPRIETARY TO HYUNDAI ELECTRIC. NO PART OF THIS DRAWING  
MAYBE REPRODUCED WITHOUT THE PERMISSION OF HYUNDAI ELECTRIC.


본 도면은 현대일렉트릭(주) 재산이므로  
허가없이 복사할 수 없음 (취급유의)

HYUNDAI  
ELECTRIC



▽	50S
▽▽	12.5S
▽▽▽	3.2S
▽▽▽▽	0.4S

REV	DATE	CONTENTS	REVD BY	CHKD BY	CHKD BY	APPD BY	일반가공공차				일반재관공차			
							1-4	±0.1	6-30	±0.5	4-18	±0.2	30-120	±0.8
							18-63	±0.3	120-315	±1.2	63-250	±0.5	315-1000	±2.0
							250-	±0.8	1000-	±3.0				

1	GROUND TERMINAL LUG		CU	--				8		
4	BOX+FRAME HEX BOLT		S45C	M6 X L15				7		
2	COVER+BOX HEX BOLT		S45C	M6 X L25				6		
2	COVER+BOX HEX BOLT		S45C	M6 X L65				5		
1	BOX GASKET		NBR	--				4		
1	COVER GASKET		NBR	--				3		
1	CONDUIT BOX COVER		AL	--				2		
1	CONDUIT BOX		AL	--				1		
Q'TY	DESCRIPTION		MATERIAL	DIMENSION		WEIGHT	PART NO.	REMARK	NO.	
APPD BY	S.K.HAN		UNIT	mm		SUBJECT		SSEN SERIES 100-132FR		DWG SIZE
CHKD BY	I.K.KIM		SCALE	1/1.5		TITLE		A3 (1:1.5)		
CHKD BY	-		PROJEC'N	3rd Angle		TERMINAL BOX ASS'Y				
DSND BY	이승호		DATE	2020-06-19						
						REF. NO		Sheet No.		of
						DWG NO		3M-234756		Revision No.
6			7		8		9			